



ISSUE

25

DECEMBER
2010



this issue

- GPNW Clinical Services **P.2**
- eHealth Updates **P.3**
- NPS **P.4**
- Practice Manager Network **P.6**
- Immunisation Program **P.6**
- GPNW Upcoming Events **P.7**

Christmas CLOSURE

All General Practice North West offices will close
12.00pm Thursday 23rd December

And Re-open
Tuesday 4th January 2011

*On behalf of the Board, Management, and staff at GPNW,
we wish you and your families a very happy Christmas.*

And may 2011 bring you the best of health and happiness.

CONTACT

Level 1, 11 Alexandra Rd
(PO BOX 358)
Ulverstone
TASMANIA 7321
PHONE (03) 6425 0800
FAX (03) 6425 0888
WEB www.gpnw.com.au

Dietetics Referral Templates

NOW available for import into your clinical software

Go to GPNW website - Resources & Links - Templates

www.gpnw.com.au/useful-links.html

A collaborative agreement between General Practice North West and Diabetes Tasmania

INSULIN COMMENCEMENT GUIDELINES

GPNW has 3 Credentialed Diabetes Educators, who work collaboratively with the general practice, to assist the GP in the implementation of Insulin in Type 2 diabetics, and enhance patient compliance and positive outcomes.

DIABETES MANAGEMENT CLINICAL RESOURCES

Dr Pat Phillips, Director of Endocrinology, North West Adelaide Health Service, and respected Endocrinologist nationally, has written the following articles, extracted from RACGP and Australian Family Physician publications.

Insulin and Type 2 Diabetes - A Simple Guide to Prevent 'stuff ups'

To view the full article, go to www.racgp.org.au/afp/200612/20061205phillips.pdf

Insulin Treatment – Starting Insulin in Type 2 Diabetes, an extract RACGP & Diabetes Australia booklet "Diabetes Management in General Practice", (2009-2010).

To view the full article, go to: (see pages 41-47)

<http://www.racgp.org.au/Content/NavigationMenu/ClinicalResources/RACGPGuidelines/Diabetesmanagement/201011diabetesmanagementgeneralpractice.pdf>

GPNW Clinical Services will close

12.00pm Thursday 23rd December 2010

And Re-open

Tuesday 4th January 2011

For Urgent

- Diabetes support please phone North West Regional Hospital on 6430 6666
- Mental Health crisis referral and support please phone 1800 332 388
- Non urgent referrals may still be faxed to GPNW and will be dealt with on return



"ADVANCED MENTAL HEALTH PRACTICAL SKILLS FOR GPs"

This course is accredited by the Royal Australian College of General Practitioners (RACGP), General Practice Mental Health Standards Collaboration (GPMHSC) as a FPS ST activity, Category 1 (40 points ALM)

The aim of this course is to provide GPs with Focussed Psychological Skills and specific mental health care management strategies derived from evidence based therapies that are able to be integrated into general practice clinical practice.

The course is spread out over a two month period to allow practice based review, assessment and trial of strategies learned by the GPs in between workshops.

This course is an active learning module (ALM) comprising of four sessions covering; Counselling Skills, Relaxation Skills & Psycho Education, self directed learning in specific areas of MBS as well as practice based skills intervention.

DATES	TIMES	NUMBERS ARE LIMITED – GET IN EARLY
Friday 4 th March 2011	All Day	
Thursday 17 th March 2011	Evening	
Friday 1 st April 2011	All Day	
Thursday 14 th April 2011	Evening	

For further information and registration contact Sharee Taylor on phone 6425 0800 or email staylor@gpnw.com.au

eHealth Updates

Gary Walker

gwalker@gpnw.com.au

INFORMATION MANAGEMENT TOOLS AND ASSISTANCE

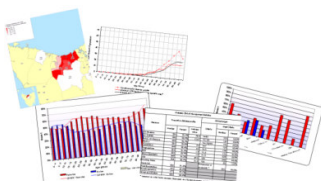
General Practice North West provide a number of tools and training to assist practices with data cleansing, patient analysis, practice benchmarking and proactive patient management. The tools and training are provided for free by GPNW.



CLINICAL AUDIT TOOL

CAT scrutinises a practice's patient information and presents it in a refreshing graphical format that is easy to understand. It can be used to assist with accreditation, or be used to produce a list of patients who fall into selected population 'target groups', making population health and quality care initiatives simple to act upon and measure, and allow a practice to identify business opportunities.

PRACTICE HEALTH ATLAS



Aims to inspire **general practice teams** to reflect on their clinical activities and to develop innovative business models for more effective health care services/outcomes.

Broken into three main areas:

demographics | chronic disease | item number utilisation

If you want to know more about the Information Management tools available for your practice, contact Gary Walker at gwalker@gpnw.com.au or Andrew Jordan at ajordan@gpnw.com.au.

EHIE GAINS APPROVAL FOR PHASE 2

The Electronic Health Information Project (eHIE) has recently been given approval from the Australian Government's Department of Health and Ageing to move to the next phase of the project.

This phase will begin the implementation of eHIE's vision of creating a regional community of practice in which electronic patient health records can be shared across healthcare organisations in North West Tasmania, providing secure access to accurate, relevant information at the point of care.

During this part of the project, an electronic referral to specialist services within the North West Area Health Service (NWAHS), as well as an electronic request for diagnostic imaging will be developed. The foundation elements of secure messaging - unique healthcare identifiers, authentication and encryption will be employed.

Both services will be developed within GP applications currently used in the region, according to Australian Standards.

They will be sent using a secure messaging service (ReferralNet), in collaboration with the receiving organisations - the NWAHS and Regional Imaging Tasmania. The message will then be received and integrated into NWAHS information systems.

These referrals will be implemented on a specialty by specialty basis in conjunction with an improvement of the patient pathway, led by the NWAHS.

eHIE will concurrently develop information and training material to assist practices. Following a successful pilot phase, a supported implementation of the referrals at all interested practices will be rolled out. The project is a collaboration between the RCS, General Practice North West, the North West Area Health Services, and the Cradle Coast Authority, and is funded by the Australian Government's Department of Health and Ageing. The project carries a shared local vision elicited from local GPs, specialists, and the NWAHS.



NPS



Dr Alison Tasker / Rebekah Sheahan

rsheahan@gpnw.com.au

NEW NPS PROGRAM TO ADDRESS OPIOID USE IN CHRONIC PAIN

This new NPS topic covers the guidelines for best practice for opioid therapy and is a Quality Prescribing Initiative (QPI) activity within the Practice Incentives Program. Participants are also eligible for RACGP QA & CPD and/or ACRRM program points. The program provides a valuable opportunity to discuss up-to-date, independent, practical, evidence-based information on current therapeutic issues. Individual visits or case study group sessions are available.

Opioids have a role in managing chronic (persistent) non-cancer pain; however their long-term benefits and harms in this context are not well understood. Current guidelines recommend a cautious approach to prescribing and emphasise strategies to optimise the benefits of opioids while minimising potential harms.

Strategies include careful patient selection, clear communication about the goals of opioid therapy, careful advice about proper use and close monitoring. Current evidence for therapy in the use of opioid patches, risks in elderly patients and breakthrough pain are included in this discussion.

This program will commence in February 2011. To participate please contact Rebekah at GPNW, phone 6425 0800 or email rsheahan@gpnw.com.au

NPS RADAR: RATIONAL ASSESSMENT OF DRUGS AND RESEARCH

Is an independent, evidence-based assessment of new drugs, new PBS listings and the latest research for doctors, pharmacists and other health professionals.

DECEMBER 2010 IN BRIEF

- Quetiapine (Seroquel and Seroquel XR) bipolar disorder listings expanded
- New dual and triple antihypertensive combinations PBS listed - be aware of potential confusion
- Alendronate and its combinations: PBS listing extended to corticosteroid-induced osteoporosis
- Eletriptan (Relpax) and other triptans for migraine
- Methoxyflurane (Penthrox) article updated

NPS CLINICAL E-AUDITS

Benefits of NPS Clinical E-Audits:

- Quick and easy to complete
- Free and independent quality improvement activity
- Evidence-based clinical guidance and patient resources
- Secure data transmission
- Immediate individualised feedback
- Compare improvements in your practice against best practice clinical indicators and your peers

Currently two programs of clinical e-audits are open for enrolment. See NPS website www.nps.org.au and go to the health professionals section, then activities.

1. Management of Hypertension

This clinical audit gives GPs an opportunity to assess absolute cardiovascular risk, modify risk factors, identify and aim for guideline-recommended blood pressure targets and tailor therapy according to coexisting conditions

2. Optimising Management of Type 2 Diabetes

This clinical audit will assist you to review the management of your patients with type 2 diabetes, including use of antidiabetic agents, frequency of monitoring and the management of coexisting dyslipidaemia and hypertension to minimise cardiovascular risk.

Complete before **30 April 2011** to be recognised in the QPI year (1 May to 30 April) in which it is completed.

Medical Software Training

If you require training or support with Medical Director, Best Practice, MedTech32, or Pracsoft, please let us know.

A range of templates for your medical software are now located on the GPNW website, keep an eye out for regular updates www.gpnw.com.au/useful-links.html

Please contact Rebekah at General Practice North West on 6425 0800 to organise a practice visit or training specific to your Practice's needs



Practice Manager Network

Gaye Aitken

gaitken@gpnw.com.au

THE NETWORK FOR 2010 – YOUR THOUGHTS..

The first Practice Manager Network meeting for 2011 is scheduled for Thursday 17th February between Midday and 2.00pm in the GPNW Boardroom. Ms Kathy Smith, the Medicare Australia, Business Development Officer has confirmed attendance.

Have you any ideas on education, training or information topics for 2011. The format and timing of the meetings are always open for discussion i.e. lunchtime or evenings, separate or combined meeting and training/education/information session.

As in previous years, you will be invited to submit agenda items for the meeting to ensure coverage of items of interest and concern. It may be also worthwhile discussing with your practice team what topic(s) they would find beneficial for the All Practice Staff Training event in 2011.

Contact Gaye via email gaitken@gpnw.com.au to discuss your suggestions either face to face or by phone 6425 0800.



Immunisation Program

Bronwyn McLaren

bmclaren@gpnw.com.au

HPV REGISTER STILL AVAILABLE FOR NOTIFICATIONS

The National Human Papillomavirus Vaccination Program (HPV) register provides an important service to you and your patients. GPs are encouraged to continue to notify doses of HPV to the HPV Register. Notifications are made on a notification form which can be downloaded from www.HPVRegister.org.au, under Information for Health Professionals. You are asked to complete this form and fax to the HPV Register. Alternatively contact the HPV Register on 1800 478 734 for assistance in submitting Gardasil vaccination notifications, or to check the vaccination status of patients. More information is available on the website www.HPVRegister.org.au.

The benefits of ongoing notification are:

- Girls/women will receive a Completion Statement once all 3 vaccinations have been administered and notified to the Register
- Girls within the schools program, with incomplete courses, will receive a History Statement to remind them to complete the 3 dose course
- The Register will provide on-line Overdue Dose reports to GPs and public immunisation providers who have registered for on-line access with the HPV Register
- Providers are able to contact the Register's Telephone Information Service or view on-line the vaccination status of their patients
- If in the future a booster dose is required, the HPV Register will contact consumers to provide appropriate advice
- Participation in the HPV Register will assist in monitoring how the HPV Vaccination program is working and measure the effect of the vaccine on cervical cancer
- Providers registered for on-line access with the HPV Register, can use the Search facility to check vaccination status of their patients.

MMR DECISION AID

Do you have parents of patients who would like more information about the measles-mumps-rubella (MMR) vaccination that is due at 12 months and 4 years of age?



Help your patients make an informed decision by referring them to the MMR Decision Aid on the National Centre for Immunisation Research and Surveillance website <http://ncirs.edu.au/immunisation/education/mmr-decision/index.php>

This decision aid has been designed to help consumers decide whether to immunise their child with the MMR vaccine.

TIMELINESS OF 4 YEAR OLD IMMUNISATIONS

4 year old immunisation rates have often been the most difficult to improve.

To support your efforts to get this age group vaccinated on time The Australian Technical Advisory Group on Immunisation (ATAGI) has recommended that the scheduled fourth dose of pertussis vaccine can be administered from the age of three years and six months, and that the adolescent booster dose can be given in the first year of high school, that is from 11 years of age. This will increase protection for siblings, especially newborns. (Reference: ATAGI Bulletin 41st Meeting 15-16 October 2009).

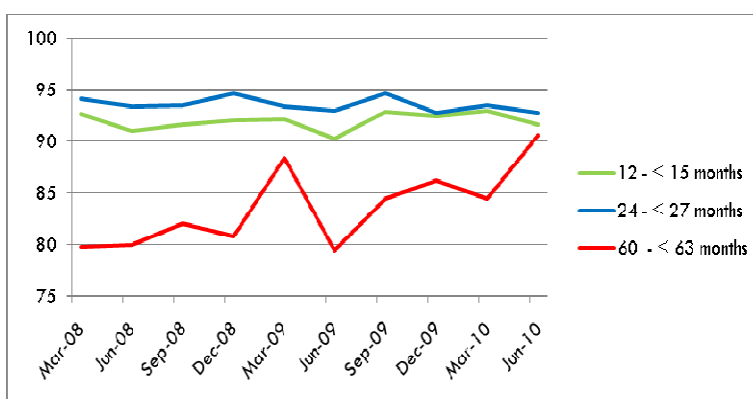


Table: Australian Childhood Immunisation Rates: Tasmania 60 - <63 months of age, 2008-2010

GPNW Upcoming Events

contact@gpnw.com.au

WEEKEND EDUCATION EVENT

Date: 25th and 26th June 2011

Topic: Diabetes

Venue: Tall Timbers, Smithton

Keynote Speaker/s:

- Dr Sean Tolhurst, Consultant Physician, Respiratory and Sleep Medicine
- Endocrinologist – Dr Roland McCallum
- Dietician – Nick Denniston

EMERGENCY RESPONSE TRAINING – FOR PRACTICE NURSES (FLYER OUT SOON)

When: Saturday 5th March 2011

Venue: Simulation Centre, School of Nursing, UTAS Launceston Campus

For further information please contact Bronwyn McLaren on 6425 0800 or email bmclaren@gpnw.com.au

Disclaimer:

General Practice North West makes this material available on the understanding that users exercise their own skill and care with respect to its use. Before relying on the material in any important matter users should carefully evaluate the accuracy completeness and relevance of the information for their purposes and should obtain appropriate professional advice relevant to their particular circumstances. The material may include views or recommendations of third parties which do not necessarily reflect the views of General Practice North West or indicate its commitment to a particular course of action.

GENERAL PRACTICE NORTH WEST

gazette



ABN 54 801 950 482

LEVEL 1, 11 ALEXANDRA RD

PO BOX 358

ULVERSTONE

TASMANIA 7315

TELEPHONE (03) 6425 0800

FAX (03) 6425 0888

WEB www.gpnw.com.au

